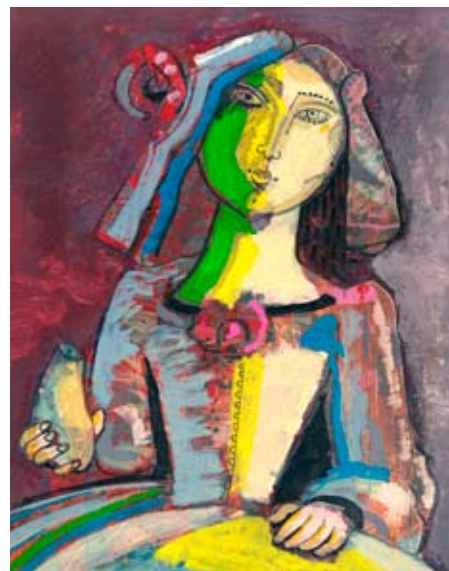


The Digital FineArt Collection

InkJet artist papers for fine art photography, digital art, photo and art reproduction





FOR ORIGINALS



"A work of art arises from the perfect balance between the conceivable and the inconceivable. The motive, the photographer, the moment and the material merge into something unique. The fine art papers by Hahnemühle play an important role in this creative process." (Andrzej Dragan)

The Digital FineArt Collection includes exclusive fine art paper with an exquisite feel and fascinating optics for the inkjet print. Thanks to our fine paper, brilliant black and white photographs or subtle color pictures magically highlight the individuality of their motives. For more FineArt visit www.hahnemuhle.com

The Art of Expression since 1584

Hahnemühle FineArt – Germany's oldest artist paper mill – has been making artist papers for traditional painting and printing techniques for more than 425 years. The Digital FineArt Collection combines the elegance and uniqueness of genuine artist papers with the impressive look of modern FineArt prints.



The range includes papers and canvas in a variety of weights and surface textures. Photographers and artists use the genuine mould-made, cotton and alpha-cellulose fiber papers treated with a premium inkjet coating for exclusive photographic and digital artworks as well as painting and photo reproductions. This is an impressive way to combine the precision of digital print media with the wonderful charm and feel of traditional FineArt papers. By working closely with leading inkjet printer manufacturers we can ensure that the papers, technology and inks are optimally coordinated. Hahnemühle FineArt inkjet papers and canvas are acid-free and extremely age-resistant. Multiple awards by TIPA, BIPP and American Photo confirm the outstanding quality of our products.



The Digital FineArt collection is divided into three categories: **Matte FineArt** - artist papers with matte surfaces in smooth and textured finishes, **Glossy FineArt** - artist papers with a glossy finish and **Canvas FineArt** - canvas made from cotton or poly-cotton.



Photo Rag®

188 · 308 · 500 gsm · 100% Cotton · white

Photo Rag® is the most popular paper chosen by photographers to create high quality fine art prints. The fine, smooth surface and feel of Photo Rag® make this paper very versatile and it is ideal for printing both black and white and color photographs and art reproductions with impressive depth.



Natural Art Duo

256 gsm · 100% alpha-Cellulose · natural white

Natural Art Duo is printable on both sides and the ideal medium for portfolios and photo albums. Using this finely textured paper the prints acquire a completely new sensuous feel compared with standard high-gloss photos. Warm tints and gray tones come into their own with this paper.



Photo Rag® Duo

276 gsm · 100% Cotton · white

Photo Rag® Duo is printable on both sides in proven Photo Rag® quality. Ideal for portfolios and photo albums.



Bamboo

290 gsm · 90% Bamboo fiber · 10% Cotton · natural white

Bamboo is the world's first digital fine art inkjet paper made from bamboo fibers. Bamboo represents spirituality, naturalness and resource-saving paper production. Particularly suitable for warm-toned color and monochrome prints, Bamboo really highlights the sensuality of images.



Photo Rag® Ultra Smooth

305 gsm · 100% Cotton · white

With its extra smooth surface, Photo Rag® Ultra Smooth is particularly interesting for users who want proven Photo Rag® quality but with less texture and a brighter whitepoint.



Photo Rag® Bright White

310 gsm · 100% Cotton · bright white

Photo Rag® Bright White is the first choice for all users who prefer an especially bright white cotton paper. Photo Rag® Bright White is ideal for reproducing high contrast images.



Stonehenge Panoramic. Photograph by Stephen Johnson. Copyright © 1996 by Stephen Johnson. All rights reserved worldwide. www.sjphoto.com

William Turner

190 · 310 gsm · 100% Cotton · white · mould-made

William Turner is a genuine mould-made paper in both look and feel with its matte watercolor texture. It is ideal for reproductions of traditional artworks and also for striking and expressive photo reproductions.



Albrecht Dürer

210 gsm · 50% Cotton · 50% alpha-Cellulose · white · mould-made

This traditional mould-made watercolor paper lends an artistic feel to art reproductions and photographs.



Torchon

285 gsm · 100% alpha-Cellulose · bright white

The term “torchon” is taken from French and means “coarse structure.” The special surface texture of this bright white paper is a reminder of this. It can capture the timeless original beauty and three dimensionality of an artwork in its own special way.



Sugar Cane

300 gsm · 75% Bagasse fiber · 25% Cotton · natural white

Hahnemühle Sugar Cane combines the high standards of a FineArt inkjet paper with responsible use of raw materials. “Bagasse” pulp is a by-product of raw sugar production. The cotton portion is made from recycling our own paper waste. Displaying the fine texture of a pastel paper Sugar Cane lends every image an artistic look and feel.



German Etching

310 gsm · 100% alpha-Cellulose · white · mould-made

This heavyweight etching board is velvety-smooth with a fine surface texture. German Etching is one of the most popular media worldwide for artwork and photography.



Museum Etching

350 gsm · 100% Cotton · natural white · mould-made

The luxurious texture of a traditional etching board and the natural white point make Museum Etching the ideal medium for images with soft tints or fine gray nuances.



FineArt Pearl

285 gsm · 100% alpha-Cellulose · bright white · pearl finish

The bright white of FineArt Pearl enables impressive contrasts and pictorial depth in black and white or color photography. The special coating provides a pearl finish.



Photo Rag® Satin

310 gsm · 100% Cotton · white · satin finish

Photo Rag® Satin bestows fine art reproductions and photographs with a soft sheen. It renders mirror and gloss effects particularly well. The unprinted areas remain matte.



Photo Rag® Baryta

315 gsm · 100% Cotton · white · high-gloss

Photo Rag® Baryta combines the virtues of a luxury cotton paper and a traditional baryta board. The very fine surface texture with the baryta gloss endows portraits with a particularly expressive character.



Photo Rag® Pearl

320 gsm · 100% Cotton · natural white · pearl finish

Photo Rag® Pearl has a smooth, uniform surface texture with a unique pearl coating. It is especially suitable for photography and art reproduction with warm gray and color tones.



FineArt Baryta

325 gsm · 100% alpha-Cellulose · bright white · high-gloss

FineArt Baryta is a paper that sets the benchmark for high color depth, large color gamut and image definition. This paper gives the "wow" factor particularly to black and white prints with an extremely high dmax and the finest gray tones. Using barium sulphate in the premium inkjet coating ensures the typical gloss that makes this paper a genuine replacement for traditional baryta papers from analogue laboratories.



Baryta FB

350 gsm · 100% alpha-cellulose · bright white · high-gloss

Baryta FB is a bright white paper with an extra smooth surface and ultra glossy coating. It corresponds to a classic baryta paper in structure and surface. The high grammage of 350 gsm reinforces the traditional character of this paper, creating visually superior prints.



Daguerre Canvas

400 gsm · Poly-Cotton · bright white

Daguerre Canvas offers a fine structure which is particularly good for fine art photo printing. Its bright whitepoint provides clear, fresh colors and contrasts for black and white reproductions. The A3 format, which is available in 20 sheet boxes, is ideal for stretching canvas of 8"x10".



Monet Canvas

410 gsm · 100% Cotton · white

Monet Canvas is a heavy cotton canvas with a woven pattern. Its natural white color is perfect for art reproduction, but also works well for high quality photo printing. Monet Canvas is also available in A3 format in 20 sheet boxes, which is ideal for stretching canvas of 8"x10".



Gallerie Wrap

The Hahnemühle Gallerie Wrap system is ideal for making quality gallery wraps in minutes. The Gallerie Wrap is a complete system of easy-to-use fastening components and stretching frames to accommodate most popular imaging formats. The system consists of corners, bars, pins and instructions. The Gallerie Wrap system requires no special tools and, with a little practice, you can make a gallery wrap in minutes. Now you can take the picture, print it and gallery wrap your image yourself.

Hahnemühle Gallerie Wrap stretching frames are available in two formats. Standard Version: 1 1/4" tall. Offered in a variety of lengths to accommodate several frame sizes. Pro Version: 1 3/4" tall. Offered in a variety of lengths to accommodate several frame sizes. Also available in pairs.



Gallerie Photo Wrap

The Hahnemühle Gallerie Photo Wrap is a pre-sized Gallerie Wrap Frame that will help you produce quality gallery wraps in minutes. The Photo Wrap is an easy-to-use print wrapping system that does not require positioning corners or special tools. The overall printed image needs to be three inches bigger than the final frame size.

Single 8.5"x11" Gallerie Wrap Frame (standard bars 1 1/4" depth) – produces a final print size of 6"x8". Includes two 8.5"x11" sheets of either Monet or Daguerre Canvas.

Single 13"x19" Gallerie Wrap Frame (standard bars 1 1/4" depth) – produces a final print size of 10"x16". Includes two 13"x19" sheets of either Monet or Daguerre Canvas.



Individual photo presentations with printable albums

FineArt Inkjet Leather Album

Photo Rag® Duo, 276 gsm

This luxury album with a leather cover is available in a square format (12 x 12"). It is excellent for creating professional portfolios, high quality presentations, limited edition booklets and much, much more. Each album contains 20 sheets of Photo Rag® Duo double-sided paper and 22 sheets interleaf paper to protect the individual fine art prints. The luxury Photo Rag® paper is made of 100% cotton and with its double-sided premium coating guarantees brilliant, high contrast, and above all, long-lasting fine art photo prints. Photo Rag® is the first choice of fineart photographers worldwide.



FineArt Inkjet Photo Cards

Photo prints in mini format but maximum quality: Hahnemühle FineArt offers the FineArt Pearl 285 gsm and Photo Rag® 308 gsm qualities as premium fine art inkjet photo cards for producing individual photos. The photo cards offer a variety of possible uses including snapshots, portable portfolios, photo albums, greeting cards, invitations and much more. The handy metal box comes with 30 sheets each of 4x6" size cards for long lasting inkjet images. The metal box embossed with the rooster logo is a practical and elegant form of packaging.



Certificate of Authenticity

The Hahnemühle Certificate of Authenticity was designed to protect the security and genuineness of limited edition artworks and reproductions on Hahnemühle paper and to reduce the risk of forgery. Each certificate is made of premium deckle-edged mould-made paper with a Hahnemühle watermark and fluorescent security fibers. A serialized numbered hologram should be added. A second, identically numbered hologram should then be applied to the reverse side of the artwork. The combination of certificate and hologram assures that each Certificate of Authenticity relates to one particular piece of art.

www.myartregistry.com offers artists and photographers the option to register their artwork



Masters Varnish

The Hahnemühle Masters Varnish offers a shield of protection for digital artwork. Available in a 1 liter can, it seals the printed artwork and protects it from ozone damage and everyday household cleaners. It increases fade, water and abrasion resistance. The varnish is an environmentally friendly, solvent-based product.



Protective Spray

The Hahnemühle protective spray offers incredible protection for valuable ink-based images. Available as an aerosol spray, it seals printed surfaces and protects them from dirt, fingerprints and moisture. It increases water resistance and significantly improves the light-fastness of the inks used without altering the surface structure.



Matte FineArt - smooth

Rolls	Photo Rag®	Natural Art Duo	Photo Rag® Duo	Bamboo	Photo Rag® Ultra Smooth	Photo Rag® Bright White
17"x39'	•			•	•	•
24"x39'	•			•	•	•
36"x39'	•			•	•	•
44"x39'	•			•	•	•
60"x39'					•	

Matte FineArt - textured

William Turner	Albrecht Dürer	Torchon	Sugar Cane	German Etching	Museum Etching
•	•	•	•	•	•
•	•	•	•	•	•
•	•	•	•	•	•
•	•	•	•	•	•

20 sheets

8.5"x11"	•	•	•	•	•	•	•	•	•	•	•
11"x17"	•	•	•	•	•	•	•	•	•	•	•
13"x19"	•	•	•	•	•	•	•	•	•	•	•
17"x22"	•	•	•	•	•	•	•	•	•	•	•

50 sheets

8.5"x11"	•	•	•		•	•	•		•		
11"x17"	•				•	•	•		•		
13"x19"	•				•	•	•		•		
17"x22"	•				•	•	•		•		

Glossy FineArt

Rolls	FineArt Pearl	Photo Rag® Satin	Photo Rag® Baryta	Photo Rag® Pearl	FineArt Baryta
17"x39'	•	•	•	•	•
24"x39'	•	•	•	•	•
36"x39'	•	•	•	•	•
44"x39'	•	•	•	•	•
60"x39'			•		•

20 sheets

8.5"x11"	•	•	•	•	•		
11"x17"	•	•	•	•	•	•	•
13"x19"	•	•	•	•	•		
17"x22"	•	•	•	•	•		

50 sheets

8.5"x11"	•	•	•	•	•		
11"x17"	•	•	•	•	•		
13"x19"	•	•	•	•	•		
17"x22"	•	•	•	•	•		

Canvas FineArt

Monet Canvas	Daguerre Canvas
•	•
•	•
•	•
•	•
•	•

Iris Sizes

Photo Rag® Satin
Photo Rag® 308, 500
Photo Rag® Bright White
William Turner 310
Torchon
German Etching

are available in IRIS sizes:
25 sheets
35" x 46.75"

Green Rooster – Hahnemühle's Green Side

The red rooster is our well known trademark – the green rooster signifies our environmental awareness. On the www.green-rooster.com website we document our commitment to the environment. As a paper manufacturer sustainability and ecology are not just buzzwords – we live them.



For more than 425 years we have been using pure spring water to manufacture our papers. The cellulose or cotton fibers are derived from sustainable production. The Bamboo and Sugar Cane papers are manufactured in a particularly eco-friendly way: from highly renewable bamboo grass and by utilizing the fibers which remain when the sugar has been extracted from the sugar cane plant. Since the beginning of 2009 we use only renewable green electricity for our paper production.



We regularly donate a portion of the proceeds from Bamboo and Sugar Cane to support environmental projects. You can find out more by visiting our green website: www.green-rooster.com.

ICC Profiles

ICC Profiles allow you to align your printer model and inks with a specific Hahnemühle paper to achieve an optimal color gamut.



These ICC profiles are available on the Hahnemuhledirect website under ICC Profiles. They can be downloaded for Mac and PC operating systems. There are a variety of printer models available from Canon, Epson and HP.

New profiles are continuously being added, so the correct ICC profile can always be downloaded for new printers as quickly as possible.

For more information please go to:
<http://www.hahnemuhledirect.com/icc>

Hahnemühle FineArt appreciates working together with many famous photographers and artists.

The following photographers have kindly permitted us to reproduce their digital artworks in this brochure:

Cover	Page 3	Page 4	Page 5	Page 6	Page 8
©Günter Pfannmüller	©Stephen Johnson	©Stephen Johnson	©Hans-Jürgen Pfund	©Jules Ober	©Ekkehardt Hofmann
©Oliver Hadji	©Jack Cardiff	©Manfred Kriegelstein	©Günter Pfannmüller	©Kim Adomat	
©Jack Cardiff	©Denis Olivier	©J.C. Vilallonga	©Rainer Stratmann	©Ekkehardt Hofmann	
©Denis Olivier	©Andrzej Dragan	©Tom Meyberg,	©Andrzej Dragan	©Hans-Jürgen Pfund	Page 11
©J.C. Vilallonga	©Martin Grahame-Dunn	Fashion design by	©Jack Cardiff	©Manfred Kriegelstein	©Hans-Jürgen Pfund
	©Andy Mackenzie	Dimitri Jelezky	©Peter Hoennemann		
Page 2	©Oliver Hadji	©Stephan Nimmesgern			
©Michael G. Magin		©Hans van Ommeren			
„Paperworks“		©Andy Katz			

Award-Winning Papers



Germany

Hahnemühle FineArt GmbH
Hahnestr. 5
D-37586 Dassel
Phone +49 55 61 79 12 87
Facsimile +49 55 61 79 13 51
dfa@hahnemuehle.de

Great Britain

Hahnemühle UK
Unit 12 . Waterways Business Centre
South Ordnance Road
GB-Enfield EN3 6JJ
Phone +44 84 53 30 01 29
Facsimile +44 19 92 76 31 05
uksales@hahnemuehle.de

France

Hahnemühle / Moulin du Coq
39/41, Rue de la Chaussée d'Antin
F-75009 Paris
Phone +33 1 53 25 04 90
Facsimile +33 1 53 25 04 91
contact@moulinducoq.fr

USA

Hahnemühle USA
722 E. Calhoun Street
Woodstock, IL 60098- USA
Phone +01 815-502-5880
Facsimile +01 815-502-5879
sales@hahnemuhleusa.com

www.hahnemuhle.com

